

Bulletin of Insectology Supplemental Material

Title: **Natural areas as reservoir of candidate vectors of *Xylella fastidiosa***

Authors: **Daniele CORNARA, Onofrio PANZARINO, Giacomo SANTOIEGEMMA, Nicola BODINO, Pamela LOVERRE, Maria Grazia MASTRONARDI, Chiara MATTIA, Enrico DE LILLO, Rocco ADDANTE**

Bulletin of Insectology, Volume 74 December 2021 pages 173-180

Index of supplemental tables and figure:

Table S1. Coordinates of Agrotec meteorological stations.

Table S2. Species abundance by month.

Table S3. Mean species abundance per sample \pm standard error in dry grassland (DGs), oak forest (OFs), pine forest (PFs) and lake shore (LS) habitats (cumulative data for 12 months). Missing standard error in LS because a single site was sampled.

Figure S1. Monthly mean temperature (August 2016-July 2017) collected from the five meteorological stations reported in table S1.

Table S1. Coordinates of Agrotec meteorological stations.

Latitude N	Longitude E	Adjacent sites
40°49'18.1"	16°24'29.5"	DG2, PF3, LS
41°04'20.3"	16°05'3.1"	PF1
41°04'23.9"	16°19'10.2"	DG1, DG3
40°51'38.9"	16°38'5.3"	OF3
40°58'32.9"	16°24'55.8"	OF1, OF2, PF2

Table S2. Species abundance by month.

		<i>Aphrophora alni</i>	<i>Cercopis vulnerata</i>	<i>Neophilaenus campestris</i>	<i>Philaenus italosignus</i>	<i>Philaenus spumarius</i>	Total
2016	August	0	0	14	33	8	55
	September	1	0	14	10	4	29
	October	0	0	1	0	0	1
	November	0	0	0	0	0	0
	December	0	0	1	0	0	1
2017	January	0	0	0	0	0	0
	February	0	0	0	0	0	0
	March	0	0	0	0	0	0
	April	0	2	1	4	2	9
	May	0	0	9	34	6	49
	June	0	0	11	24	1	36
	July	0	0	1	26	4	31
Total		1	2	52	131	25	211

Table S3. Mean species abundance per sample \pm standard error in dry grassland (DGs), oak forest (OFs), pine forest (PFs) and lake shore (LS) habitats (cumulative data for 12 months). Missing standard error in LS because a single site was sampled.

	<i>Aphrophora alni</i>	<i>Cercopis vulnerata</i>	<i>Neophilaenus campestris</i>	<i>Philaenus italosignus</i>	<i>Philaenus spumarius</i>
DGs	0.00 \pm 0.00	0.67 \pm 0.67	0.67 \pm 0.67	3.33 \pm 0.67	0.67 \pm 0.67
OFs	0.00 \pm 0.00	0.00 \pm 0.00	0.33 \pm 0.33	2.67 \pm 1.20	0.33 \pm 0.33
PFs	0.33 \pm 0.33	0.00 \pm 0.00	16.00 \pm 10.82	20.33 \pm 1.33	7.00 \pm 2.65
LS	0.00	0.00	16.00	31.33	3.67

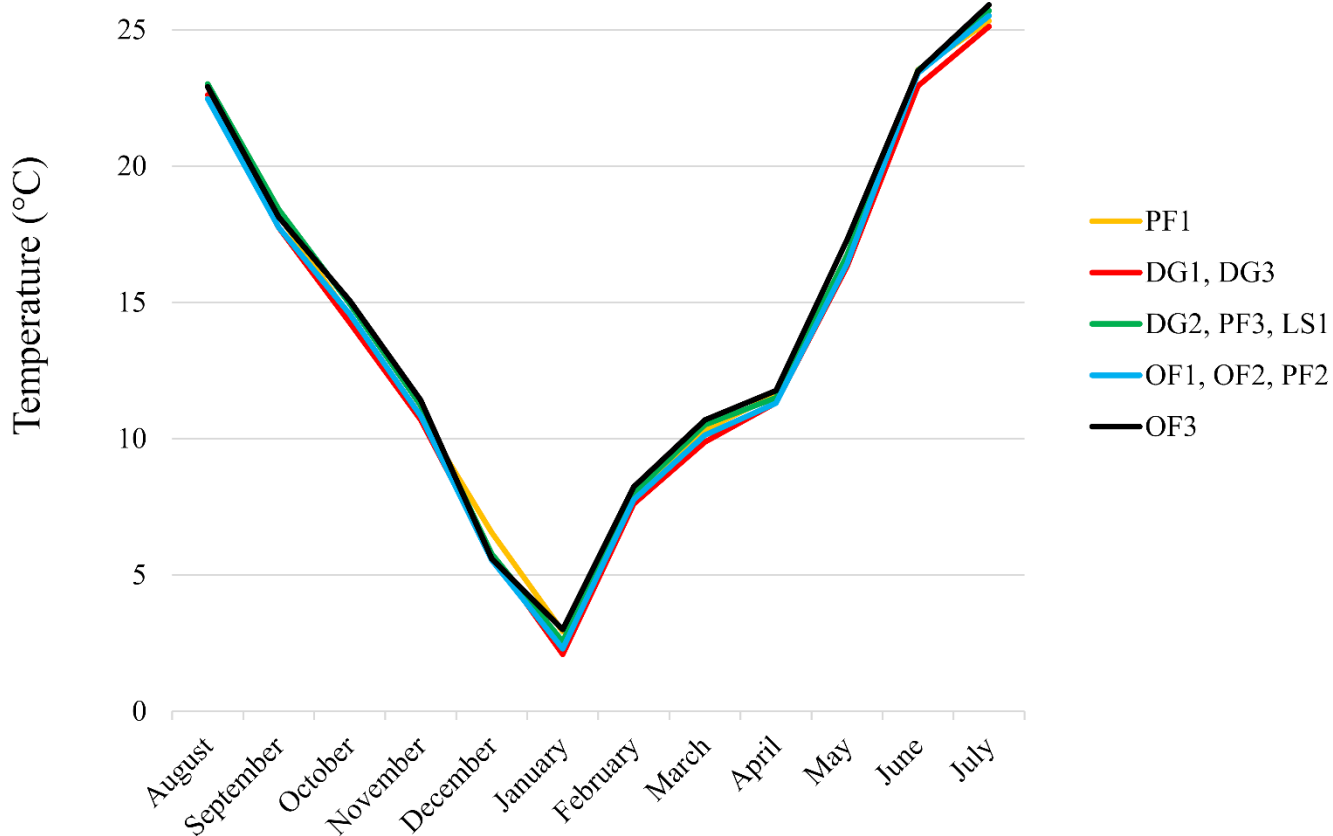


Figure S1. Monthly mean temperature (August 2016-July 2017) collected from the five meteorological stations reported in table S1.